

Content available at: <https://www.ipinnovative.com/open-access-journals>

Indian Journal of Pathology and Oncology

Journal homepage: [www.ijpo.co.in](http://www.ijpo.co.in)

## Case Report

# Intriguing case of foreign body in uterine cavity

Senthilkumaran D<sup>1</sup>, Hemavathy V<sup>2</sup>, Valli Priyaa P<sup>1,\*</sup>, Bharathi K. V<sup>1</sup>,  
Banushree C Srinivasamurthy<sup>1</sup>, Ramachandra V Bhat<sup>1</sup>, Sujindra S<sup>2</sup>

<sup>1</sup>Dept. of Pathology, Indira Gandhi Medical College & Research Institute, Puducherry, India

<sup>2</sup>Dept. of Obstetrics & Gynaecology, Indira Gandhi Medical College & Research Institute, Puducherry, India



## ARTICLE INFO

### Article history:

Received 19-02-2023

Accepted 22-02-2023

Available online 16-03-2023

### Keywords:

Osseous metaplasia

Abnormal uterine bleeding

Pelvic inflammatory disease

Retained fetal products

Extramedullary hematopoiesis

## ABSTRACT

**Objective:** To present a rare case of endometrial cavity osseous material with an unusual finding of extramedullary hematopoiesis and a brief review of literature.

**Case Report:** A 44-year-old female P1L1 with complaints of excessive bleeding per vaginum for 12 months. Pelvic examination showed approximately 16 weeks sized uterus. Radiologists found calcific material (?foreign body) in the anterior fundal wall of uterus. Total hysterectomy was done and sent to us for histopathological examination. On sectioning uterus, a bony spicule was seen freely lying within the cavity. Histopathology confirmed the bony nature of the foreign material which also showed hematopoietic component. Due to the associated finding of endometritis, there was high suspicion of retained fetal products in this case.

**Conclusion:** Recognition of osseous material within the endometrial cavity as a benign entity is important to avoid misdiagnosis as Carcinosarcoma microscopically, however complete clinicopathological correlation ensures correct diagnosis and to rule out retained products of conception, tuberculosis, and hematologic disease. Diagnosis and prompt treatment of foreign body within uterine cavity may be necessary to avoid complications like infertility and abnormal bleeding.

This is an Open Access (OA) journal, and articles are distributed under the terms of the [Creative Commons Attribution-NonCommercial-ShareAlike 4.0 License](https://creativecommons.org/licenses/by-nc-sa/4.0/), which allows others to remix, tweak, and build upon the work non-commercially, as long as appropriate credit is given and the new creations are licensed under the identical terms.

For reprints contact: [reprint@ipinnovative.com](mailto:reprint@ipinnovative.com)

## 1. Introduction

Endometrial osseous metaplasia/ osseous material within the uterus is defined as presence of bone (mature or immature) embedded within the endometrium. It is an unusual clinical condition which can be symptomatic or asymptomatic and incidentally detected on ultrasound or gynaecological procedures. Etiopathogenesis is not clear but various theoretical hypotheses have been proposed and studied to explain osseous metaplasia for the presence of bone within the endometrial tissue. This condition is very rare, and its reported incidence is low. Clinically the patients may be asymptomatic or may present with infertility,

abnormal uterine bleeding, or lower abdominal pain due to associated pelvic inflammatory disease. Recognition of osseous material within the endometrial cavity as a benign entity is important to avoid misdiagnosis as Carcinosarcoma microscopically, however complete clinicopathological correlation ensures correct diagnosis. The most common association is history of retained fetal products however very few cases have been reported without the history of abortion, here we present such a rare case with an unusual finding of extramedullary hematopoiesis and a brief review of literature.

\* Corresponding author.

E-mail address: [pvpriyadr@gmail.com](mailto:pvpriyadr@gmail.com) (V. Priyaa P).

## 2. Case Report

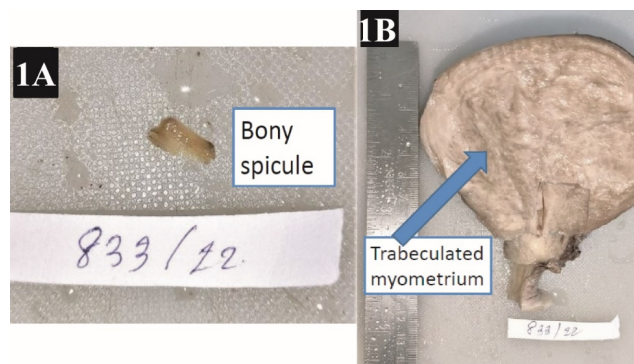
A 44-year-old female P1L1 who is not sterilized presented with complaints of excessive bleeding per vaginum for 12 months. The patient was having apparently normal menstrual cycle before 12 months. Cervix and vagina were healthy on per vaginal examination. Pelvic examination revealed a 16-18 weeks sized uterus, firm in consistency. Bilateral fornices were free. No hepatomegaly or splenomegaly. Conventional Papanicolaou test (PAP) smear examination report was mild inflammatory smear with bacterial vaginosis and no evidence of intraepithelial lesion or malignancy. Ultrasonography (USG) revealed presence of calcification (? foreign body) in the anterior fundal wall of Uterus. Other USG findings were Fibroid in posterior wall of uterus and mild hydroureteronephrosis. Hematological investigations were normal. In view of fibroid and completed family, patient underwent total abdominal hysterectomy. Intra-operatively findings were 18 weeks sized uterus and normal ovaries & fallopian tubes. The specimen was sent to pathology department for histopathological examination.

We received Hysterectomy specimen, uterus with cervix measuring 13x11.5x8 cm. Outer surface of cervix was unremarkable. Cut surface of cervix showed endocervical canal measuring 1cm in length. On sectioning uterus, a small bony spicule measuring 1.5x0.4 cm was seen freely lying within the endometrial cavity (Figure 1 A). Endometrial canal was obliterated by trabeculated myometrium (Figure 1 B) with an average myometrial thickness of 3 cm. Endometrial thickness was 0.3 cm. Bits from cervix, endomyometrium and myometrium were given for histopathological examination. The bony spicule within the endometrial cavity was decalcified and all embedded for histopathology.

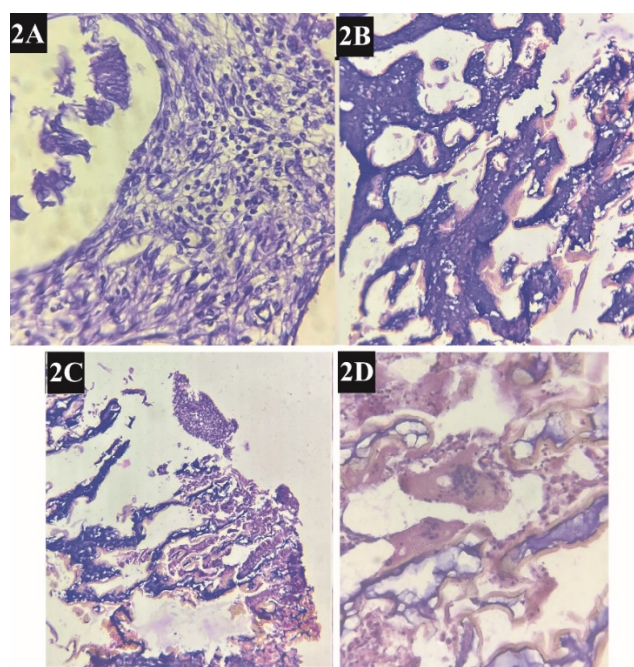
Microscopically, multiple sections studied showed chronic papillary endocervicitis and late proliferative phase endometrium. Endometrial stroma showed chronic inflammatory cell infiltrate composed of lymphocytes and plasma cells suggestive of Endometritis (Figure 2 A). Section studied from bony spicule showed immature lamellar bone with few islands of hematopoietic cells (Figure 2 B-D). Myometrium showed embedded endometrial glands and stroma, suggestive of Adenomyosis (Figure 3). Based on the above findings, retained fetal products can be considered however osseous metaplasia has to be ruled out.

## 3. Discussion

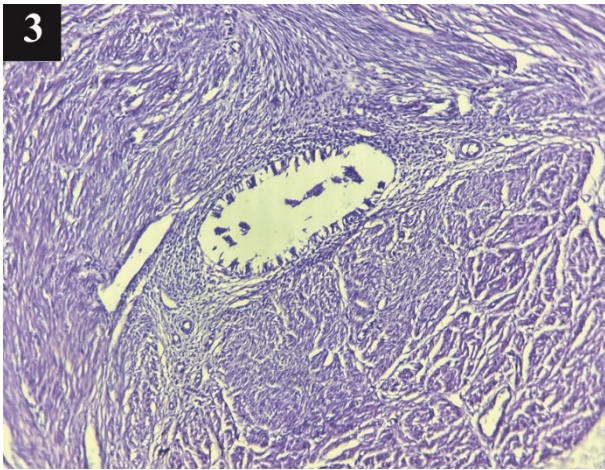
Endometrial osseous material within the endometrial cavity with extramedullary hematopoiesis is an unusual entity. Its reported incidence is 3 cases per 10000 women population.<sup>1</sup> According to Singh P et al., nine case reports are from India and approximately 80 cases in the



**Fig. 1:** A): Bony spicule that was lying within the endometrial cavity; B): Hysterectomy specimen showing trabeculated myometrium obliterating the endometrial canal



**Fig. 2:** Extramedullary hematopoiesis with underlying endometritis; A): Microphotographic image showing endometrial stroma with chronic inflammatory cells consisting of lymphocytes and plasmacells. 40x H&E stain; B): Microphotographic image showing immature lamellar bone with hematopoietic cells. 10x H&E stain; C): Microphotographic image showing immature lamellar bone with hematopoietic cells. 4x H&E stain; D): Microphotographic image showing immature lamellar bone with osteoclast giant cells. 40x H&E stain



**Fig. 3:** Microphotographic image showing myometrium with embedded endometrial glands and stroma. 40x H&E stain

entire world have been reported.<sup>2</sup> Metaplasia is defined as replacement of one mature somatic cell type to another mature somatic cell type either epithelial or mesenchymal.<sup>3</sup> The most common metaplasias occurring in endometrium are mucinous metaplasia, ciliated tubal metaplasia, and squamous metaplasia. The major triggering factors are hormonal or irritative stimuli, sometimes mutation.<sup>4</sup> The first documentation of osseous metaplasia of endometrial stromal fibroblasts was by Virchow in 1884.<sup>5</sup> In majority of cases, the patients have history of first trimester abortion in reproductive age group. Our case belonged to perimenopausal age group. Various hypotheses have been proposed to explain bone formation within the endometrium. History of abortion is the most common association seen. Retained fetal bones may stimulate endochondral ossification or may cause metaplasia of mesenchymal tissue into bone in response to chronic irritation caused by fetal parts or by dystrophic calcification to retained necrotic fetal tissues.<sup>6–8</sup> A few cases that occurs without the history of pregnancy cannot be explained by this theory, which supports the possibility of true heterotopia where endometrial stromal cells especially fibroblasts are converted into osteoblasts resulting in bone formation. An imbalance between superoxide free radical and superoxide dismutase system has also been implicated in pathogenesis.<sup>9</sup> Other possible causes that have been researched are abnormal calcium, vitamin-D and phosphorus metabolism like hypercalcemia (metastatic calcification), hyperphosphatemia and hypervitaminosis D.<sup>10</sup> In our case, even though history of abortion is not given, a single bony spicule softly embedded or freely attached within the endometrial cavity and presence of endometritis suggest retained fetal products. Lewis et al.<sup>11</sup> also documented the presence of inflammation by the increased concentrations of prostaglandins in endometrial

osseous metaplasia. According to Gru AA et al.<sup>12</sup> eleven cases of uterine extramedullary hematopoiesis have been reported earlier, among which 2% of cases had the presence of megakaryocytes. However, it is rarely associated with underlying serious hematologic disease. In the present case, there was no underlying hematologic disease. Clinically, the patients may present with infertility due to presence of osseous component within the endometrial tissue preventing the implantation of blastocyst.<sup>13</sup> However prompt removal of the bony spicules can restore the fertility. Sometimes patients may present with abnormal uterine bleeding or lower abdominal pain due to associated pelvic inflammatory disease. Tuberculosis has to be ruled out which can have the similar findings. Presence of heterotopic tissues within the endometrial tissue microscopically should also be investigated for carcinosarcoma even though it is rare, especially in postmenopausal women. In this case, the clinical history and gross examination ruled out the possibility of carcinosarcoma.

Ultrasound examination may show an incidental finding of osseous metaplasia, as in our case, however in cases of infertility it plays an important role in its primary diagnosis. In USG, it has a characteristic hyperechogenic pattern. First thing to be ruled out is presence of intra-uterine device. In absence of history of intra-uterine devices, hysteroscopy is both diagnostic and therapeutic in patients with osseous metaplasia. In extensive osseous metaplasia where bony spicules are deep within the myometrium, use of laparoscopic control has been reported in prevention of uterine perforation.<sup>7</sup> In our case, total abdominal hysterectomy was done in view of provisional diagnosis of fibroid, which is curative for endometrial osseous metaplasia as well.

#### 4. Conclusion

Endometrial osseous metaplasia/ osseous component even though rare, important considerations to be kept in mind for non-IUD users are retained products of conception, tuberculosis and rarely serious hematologic disease has to be ruled out especially with finding of extramedullary hematopoiesis. The history of abortion being the most common association is not given by the patient in this case, however retained fetal products cannot be ruled out. Clinicopathological correlation starting from clinical history to basic investigations and ancillary tests help to narrow similar differentials and to identify a specific etiology. In case it is associated with serious pathology, early diagnosis after ultrasound screening can help in the better management of these patients.

#### 5. Statement of Responsibility

All the authors mentioned have made substantial contributions to the conception, and design of the work.



## 6. Source of Funding

Nil.

## 7. Conflicts of Interest

Nil.

## References

1. Sabatini L, Rainey AJ, Tenuwara W, Webb JB. Osseous metaplasia of cervical epithelium. *BJOG*. 2001;108:333–4.
2. Singh P, Kapur K, Singla S, Naz N. Endometrial osseous metaplasia and mature bone formation with extramedullary hematopoiesis. *J Hum Reprod Sci*. 2011;4(1):56–7.
3. Giroux V, Rustgi AK. Metaplasia: tissue injury adaptation and a precursor to the dysplasia- cancer sequence. *Nat Rev Cancer*. 2017;17(10):594–604.
4. Nicolae A, Preda O, Nogales FF. Endometrial metaplasias and reactive changes: a spectrum of altered differentiation. *J Clin Pathol*. 2011;64(2):97–106.
5. Virchow R. Ueber metaplasia. *Vichows Arch Abt Pathol Anat*. 1884;97:410.
6. Ceccacci L, Clancy G. Endometrial ossification: report of an additional case. *Am J Obstet Gynecol*. 1981;141(1):103–4.
7. Rodriguez BD, Adamson GD. Hysteroscopic treatment of ectopic intrauterine bone. A case report. *J Reprod Med*. 1993;38(7):515–20.
8. Marcus SF, Bhattacharya J, Williams G, Brinsden P, Hamou J. Endometrial ossification: a case of secondary infertility. Report of two cases. *Am J Obstet Gynecol*. 1994;170(5 Pt 1):1381–3.
9. Bahçeci M, Demirel LC. Osseous metaplasia of the endometrium: A rare cause of infertility and its hysteroscopic management. *Hum Reprod*. 1996;11(11):2537–9.
10. Perino A, Mangione D, Svelato A, Forlani F, Gargano F, Incandela D, et al. Chronic renal failure and endometrial osseous metaplasia: A hypothetical pathway. *Acta Obstet Gynecol Scand*. 2013;92(1):111–9.
11. Lewis V, Khan-Dawood F, King M, Beckham C, Dawood MY. Retention of intrauterine fetal bone increases menstrual prostaglandins. *Obstet Gynecol*. 1990;75(3 Pt 2):561–3.
12. Gru AA, Hassan A, Pfeifer JD, Huettner PC. Uterine extramedullary hematopoiesis: what is the clinical significance? *Int J Gynecol Pathol*. 2010;29(4):366–73.
13. Polat I, Sahin O, Yildirim G, Karaman E, Erim A, Tekirdag AI. Osseous metaplasia of the cervix and endometrium: a case of secondary infertility. *Fertil Steril*. 2011;95(7):2434.


## Author biography

**Senthilkumaran D**, Postgraduate  <https://orcid.org/0000-0002-8299-5376>

**Hemavathy V**, Postgraduate  <https://orcid.org/0000-0002-5052-8300>

**Valli Priyaa P**, Assistant Professor  <https://orcid.org/0000-0003-1543-5480>

**Bharathi K. V**, Associate Professor  <https://orcid.org/0000-0002-7365-756X>

**Banushree C Srinivasamurthy**, Professor and HOD  <https://orcid.org/0000-0003-4637-8837>

**Ramachandra V Bhat**, Professor  <https://orcid.org/0000-0001-5372-625X>

**Sujindra S**, Associate Professor  <https://orcid.org/0000-0001-6077-6351>

**Cite this article:** Senthilkumaran D, Hemavathy V, Priyaa P V, Bharathi K. V, Srinivasamurthy BC, Bhat RV, Sujindra S. Intriguing case of foreign body in uterine cavity. *Indian J Pathol Oncol* 2023;10(1):89-92.